



**ODTÜ
METU**

Welcome to the Department of Psychology – METU!

Our department's undergraduate program was founded in 1959. Our first students graduated in 1964. Up until now, we have maintained our undergraduate program uninterrupted. Our first graduate programs were founded in 1982. Our department has offered both M.Sc. and Ph.D. programs in the subareas of clinical, cognitive, developmental, industrial and organizational, social, and traffic and transportation psychology. We design our undergraduate and graduate programs so that students develop their theoretical foundations, be competent in topics of methods and measurement, be active in research, and engage as active psychologists in the applied areas. Our department, which has 18 faculty members, who publish in internationally and nationally acclaimed journals and receive prestigious rewards from national institutes like TÜBİTAK, TÜBA, and YÖK, and many other international institutes, experiences the pride of being a pioneer amongst the psychology departments of Turkey. At the same time, we aim to give unique contributions to the field with our international projects.



Social Sciences Building

Important Web Pages

The rules and regulations, directives, and guides of METU:

<http://oidb.metu.edu.tr/en/academic-rules-and-regulations>

It is imperative that all students read the following:

- Rules and regulations governing undergraduate studies:

<http://oidb.metu.edu.tr/en/middle-east-technical-university-rules-and-regulations-governing-undergraduate-studies>

- Guides on Integrity

[. METU Guide for Rules to Be Followed In an Examination Environment](#)

[. METU Academic Integrity Guide for Students](#)

All can be accessed both in English and Turkish.

University catalog: <https://catalog.metu.edu.tr/>

Psychology department: <https://psy.metu.edu.tr/en>

PSY undergrad links: <https://psy.metu.edu.tr/en/undergraduate>

Here you can access the [curriculum \(As of 2020 Fall\)](#), **list of courses, **semester course [schedules](#)**, **information on [summer internships](#)**, **minor program**, and related documents.**

Letter Grades

Letter	Points	Description
AA	4	Passing grades
BA	3.5	
BB	3	
CB	2.5	
CC	2	
DC	1.5	Minimal passing grades
DD	1	
FD	0.5	Failing grades
FF	0	
NA	0	
S	—	Satisfactory (passing)
U	—	Unsatisfactory (failing)
I	—	Incomplete; there is something that you need to do before getting one of the grades above
W	—	Withdrawn; you officially withdrew from the course.
EX	—	Exempt.

Standing

GPA: *Grade Point Average*
Weighted average of letter grade points for one semester.

CGPA: *Cumulative Grade Point Average*
Weighted average of letter grade points for all courses you have taken since the first semester.

CGPA ≥ 2.0	*	... and GPA ≥ 3.5	High Honor
		... and GPA ≥ 3.0	Honor
		... and GPA ≥ 2.0	Satisfactory
 and GPA ≥ 2.0	Sufficient
CGPA < 2.0		... or GPA < 2.0	Fail
		... for two succeeding semesters	Probation

* If at least 3 courses are taken, and all have passing letter grade ...

Courses and Grades

- **To graduate**, your CGPA should be at least 2.00 and you should not have a failing grade. Normal duration of the psychology program is 4 years. You should graduate within the maximum duration of 7 years.
- If your CGPA ≥ 3.00 at the end of first year, you may apply to a **double-major** program. If CGPA ≥ 2.50, you can apply to a **minor** program. Check the *academic calendar* for the application period for these programs.
- Normal **course load** per semester for the psychology program is 5 courses with credit. The course load can be increased by 1 or 2 if CGPA exceeds 2.00 and 2.50, respectively. The minimum possible load is 3.
- **Repeating** courses:
 - All failed courses must be repeated (or replaced).
 - You can repeat a passed course only within the next 3 semesters.
 - There is no time restriction for repeating failed courses.
- If your CGPA < 2.0 for two succeeding semesters, then you will be on **probation** in the following semester. If you are on probation, then you can enroll *only* to courses that you have taken before (excluding those with W grade), until you increase your CGPA above 2.00. Also
 - the "3 semester rule" does not apply to you for courses with DC and DD grades;
 - you can replace an elective course with another one that you haven't taken before.

Curriculum at a Glance

The requirements for a B.S. degree in psychology include 17 must courses with credit (56 credits), 7 non-credit must courses, and 20 elective courses (8 restricted departmental electives, 5 departmental electives, 3 non-departmental electives, and 4 free electives). The restricted departmental electives must be taken from concentration areas 1-5. You will be taking a total of 44 courses with 116 METU credits and 248 ECTS.

SEMESTER 1 PSY 1011 Fundamentals of Psychology I SOC 109 Intro. to Sociology BIOL 106 General Biology Non-Departmental (From Philosophy) ENG 101 TURK 101 (16 credits) (29 ECTS)	3(3,0) 6 ECTS 3(3,0) 5 ECTS 3(3,0) 5 ECTS 3(3,0) 5 ECTS 4(4,0) 6 ECTS NC 2 ECTS	SEMESTER 2 PSY 1012 Fundamentals of Psychology II PSY 1020 Ethics Non-Departmental (From Sociology) Non-Departmental (From Econ/Mat/Science) ENG 102 TURK 102 IS 100 BA 100 Career Planning (16 credits) (33 ECTS)	3(3,0) 6 ECTS 3(3,0) 6 ECTS 3(3,0) 5 ECTS 3(3,0) 5 ECTS 4(4,0) 6 ECTS NC 2 ECTS NC 1 ECTS 0(0,1) 2 ECTS
SEMESTER 3 PSY 2101 Research Methods in Psy. PSY 2102 Statistics for Psychology Restricted 1 (22XX, 32XX, 42XX) ENG 211 HIST 2101 (14 credits) (30 ECTS)	4(3,2) 9 ECTS 4(3,2) 8 ECTS 3(3,0) 7 ECTS 3(3,0) 4 ECTS NC 2 ECTS	SEMESTER 4 PSY 2301 Developmental Psychology PSY 2401 Social Psychology Restricted 1 (22XX, 32XX, 42XX) Restricted 1 (22XX, 32XX, 42XX) Non-Departmental HIST 2102 (15 credits) (33 ECTS)	3(3,0) 6 ECTS 3(3,0) 6 ECTS 3(3,0) 7 ECTS 3(3,0) 7 ECTS 3(3,0) 5 ECTS NC 2 ECTS
SEMESTER 5 PSY 3101 Testing and Measurement PSY 3501 Psychopathology Restricted 2 (33xx, 34xx, 43xx, 44xx) Restricted 4 (36xx, 37xx, 46xx, 47xx) Free Elective ¹ (16 credits) (33 ECTS)	4(3,2) 8 ECTS 3(3,0) 6 ECTS 3(3,0) 7 ECTS 3(3,0) 7 ECTS 3(3,0) 5 ECTS	SEMESTER 6 Restricted 2 (33xx, 34xx, 43xx, 44xx) Restricted 3 (35xx, 38xx, 45xx, 48xx) Restricted 5 (35xx, 36xx, 37xx, 38xx, 45xx, 46xx, 47xx, 48xx) ENG 311 or Free Elective Non-Departmental (15 credits) (30 ECTS)	3(3,0) 7 ECTS 3(3,0) 7 ECTS 3(3,0) 7 ECTS 3(3,0) 4 ECTS 3(3,0) 5 ECTS
SEMESTER 7 PSY 4090 Summer Practice Departmental Elective ² Departmental Elective Free Elective Non-Departmental Elective (12 credits) (34 ECTS)	NC 10 ECTS 3(3,0) 7 ECTS 3(3,0) 7 ECTS 3(3,0) 5 ECTS 3(3,0) 5 ECTS	SEMESTER 8 Departmental Elective Departmental Elective Departmental Elective Free Elective (12 credits) (26 ECTS)	3(3,0) 7 ECTS 3(3,0) 7 ECTS 3(3,0) 7 ECTS 3(3,0) 5 ECTS

¹**FREE ELECTIVE:** A departmental or non-departmental elective course.

²**DEPARTMENTAL ELECTIVE:** An elective from any Restricted Groups (1-5) or the courses identified under the Departmental elective list. For course lists see: <https://psy.metu.edu.tr/en/node/379>

Internship Opportunities

Undergraduate students in the psychology program are required to do a Summer Internship for a minimum of 20 consecutive days. Students can do additional volunteer internships. To be eligible for any internship, students need to have successfully finished their second year of study. Before applying to internships students join the internship orientation seminar conducted every year in December.

<https://psy.metu.edu.tr/en/internship-minor-program>

Students can do their required internships in Europe via the Erasmus+ EU Traineeship program:

<https://ico.metu.edu.tr/>

ERASMUS Exchange

Erasmus+ European Mobility is a program that enables student and staff mobility between higher education institutions (HEIs) of 28 EU member countries plus Iceland, Liechtenstein, Serbia, Norway, North Macedonia, and Türkiye. To participate in this program HEIs of these countries apply to European Commission to be able to get eligible for Erasmus Charter for Higher Education (ECHE). International cooperation between HEIs in these countries is established through bilateral student and staff mobility agreements. Erasmus+ European Mobility Programme provides monthly grant to the students in order to help them cover their living expenses during their Erasmus mobility period abroad.

<https://ico.metu.edu.tr/>

Undergraduate Research Opportunities

AdımODTÜ Undergraduate Research Projects

Through AdımODTÜ, a joint project of METU Corporate Communications Office and METU Development Foundation, undergraduate, graduate students, students' communities, and researchers can create their own projects for scientific, cultural and sports activities and share them with METU members and enthusiasts living in more than 140 countries with the support of the AdımODTÜ team. As well as providing financial support for projects, the project owners can announce their studies. After the project is completed, a detailed report is sent to sponsors and the persons who are interested in the project.

You can visit <https://adimodtu.org.tr> website to have detailed information about AdımODTÜ projects and to support the projects by posting and announcing them on social media networks.

The Undergraduate Research Projects which have been supported by AdımODTÜ in 2022 can be seen [here](#). In 2022, 27 students in 10 groups from the psychology department were supported.

The logo for AdımODTÜ features the word "adım" in a bold, red, lowercase sans-serif font, with "ODTÜ" in a smaller, black, uppercase sans-serif font directly below it.

ODTÜ Geliştirme Vakfı:
Üniversiteler Mahallesi,
ODTÜ Küme Evleri,
No:152 Çankaya / Ankara



adimodtu@odtugv.org.tr



<https://adimodtu.org.tr/>

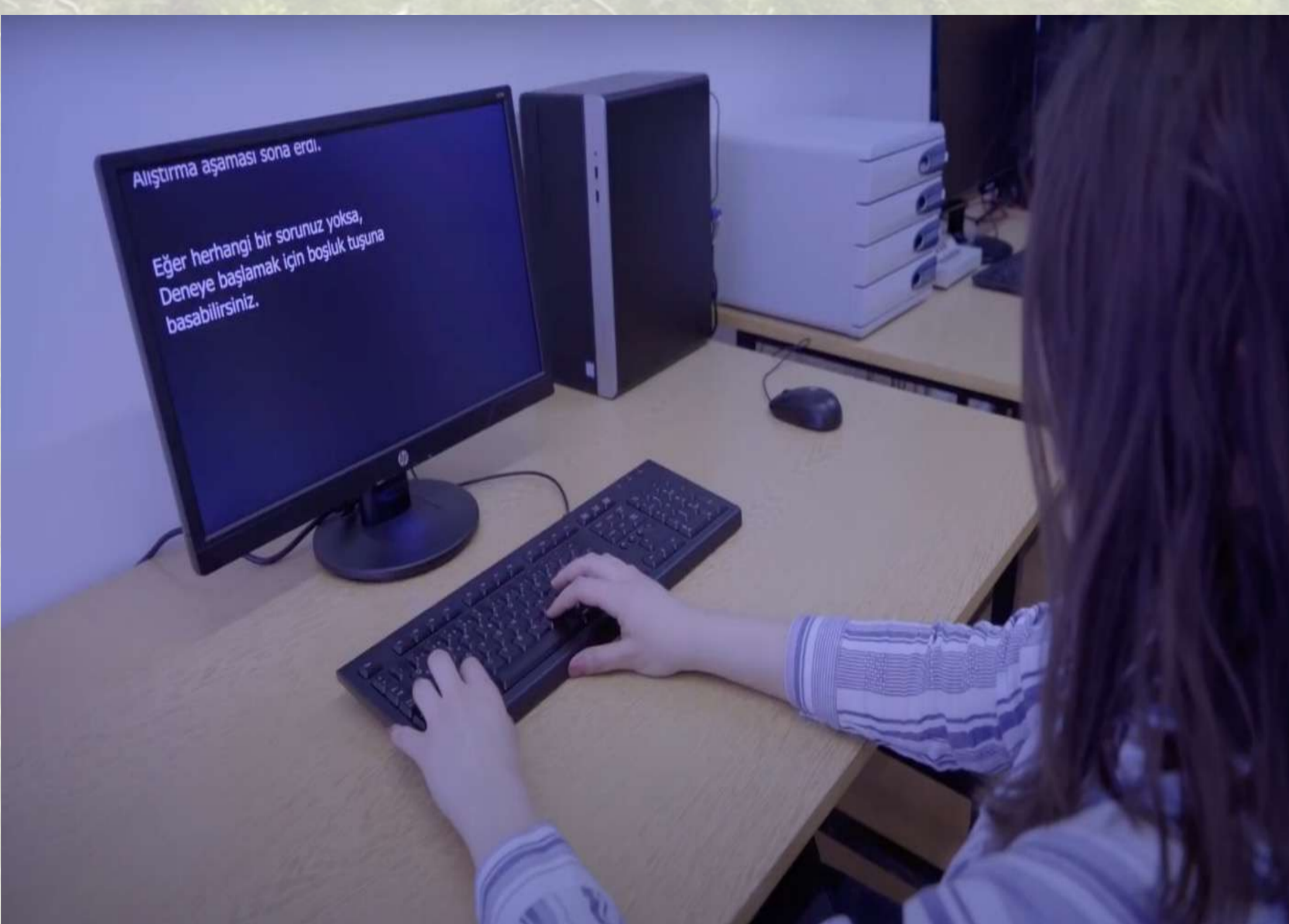


(312) 480 3303

Faculty Labs and Research Groups

METU Psychology Department has four laboratories that are open to the use of all researchers. Rooms with Mirror, Bz7 Lab, Bz8c Lab. Detailed information about these laboratories can be found [here](#).

Currently, there are nine research groups led by one or more senior researchers of the METU Psychology Department. In addition to these research groups, AYNA Clinical Psychology Support Unit assists clinical master and Ph.D. programs. Detailed information about these research groups and AYNA Clinical Psychology Support Unit can be found [here](#).



On-Campus Support for Student Well-Being

There are specific centers and programs in campus that work towards promoting student well-being. Below are brief descriptions of their services and web pages for more detailed information.

Disability Support Office

Aims to provide students with disabilities at our university equal access to the facilities and services of the university; creating an environment supportive of disabled students' academic, social, personal, and vocational development. Disability Support Office provides services based on academic and social accommodations for all students with disabilities. *Visual disability, *Hearing disability, *Speech and language disorders, *Mobility and physical impairments, *Attention deficit and hyperactivity disorder, *Specific learning disability (Dyslexia, dyscalculia etc.), *Chronic health problems (Diabetes, asthma, cancer etc.), *Psychiatric disorders (Bipolar disorder, schizophrenia etc.), *Autism spectrum disorders, *Short-term disability conditions (Accidents, post-surgical process etc.)

If you need support or any special arrangements for your courses and exams, for accessing facilities and other services due to your sight, hearing, motion, or chronic troubles; about any issue regarding your university life; or if you would like to be informed about any of these topics, contact us and we can seek a solution together.

In case an authorized institution has certified the disability situation and this certification has been approved by the METU Medical Center, our office is ready to support our students. Since last-minute applications raise legal difficulties, we encourage our students to keep in contact with our office. It is important to note that, communication between us and the student is vital for us to provide the most suitable solutions to our students' needs.



METU Library,
Solmaz İzdemir Hall



engelsiz@metu.edu.tr



engelsiz.metu.edu.tr



(312) 210 71 96

Unit for the Prevention of Sexual Harassment and Assault (UPSH – CİTÖB)

UPSH has been established on May 2016. UPSH collaborates with the colleagues from the Program of Gender and Women's Studies. It aims to contribute to the creation of an environment based on mutual respect and free from any kind of sexual harassment or assault; to foster personal, intellectual and academic development; to establish and run effective support and empowerment mechanisms to encounter sexual harassment and assault; to carry training activities on prevention and prohibition of sexual harassment and assault as well as awareness raising activities on gender equality and the prohibition of any basic discrimination based on sex, sexual orientation, and sexual identity.

Applications to the Unit can be made through e-mails or an official letter within an envelope (without the name of the applicant) to the Office of Documents and Archives.



citob@metu.edu.tr



citob.metu.edu.tr

ODTÜ Center for Advancing Learning and Teaching (ODTÜ ÖGEM)

ODTÜ Center for Advancing Learning and Teaching (ODTÜ ÖGEM) aims to support the development of learning and teaching activities at the university. The center offers programs, individual and group counseling, and seminars about topics such as adaptation to college life, academic success, procrastination, motivation, study habits, test anxiety, presentation anxiety, effective communication, coping with negative emotions, and romantic relationships.

You can e-mail the center to make an appointment.



ÖGEM Merkez
Mühendislik Binası, 4.
Kat.



ogem@metu.edu.tr



ogem.metu.edu.tr/



(312) 210 71 75

Centers for Psychological Well-Being

AYNA Clinical Psychology Unit

The aims of the AYNA Clinical Psychology Unit are;

- . To provide psychological evaluation and psychotherapy services to clients or groups,
- . To provide clinical supervision opportunities for clinical psychology graduate students,
- . To provide research, training and consultancy services in the fields related to clinical psychology,
- . To carry out academic activities such as seminars or symposiums.

*** Psychology students can do volunteer summer internships at AYNA.
For more information visit the website.

If you need support for yourself or a close one in a mental health emergency situation, you can reach ***Ayna Hotline which is available 24/7 at **0 (312) 955 01 01**.



Ayna Klinik Psikoloji
Destek Ünitesi Psikoloji
Bölümü, ODTÜKENT
Lojmanları, 1602/1.



kpu@metu.edu.tr



ayna.metu.edu.tr/



(312) 266 58 65
(312) 210 67 13

Psychological Counselling and Guidance Center (PCGC – PDRM)

Gives psychological counseling and guidance services and psychiatric-psychological treatment at METU Medical Center.

Principles:

- *All psychological meetings are kept as secret in the frame of ethics,
- *The information about the patients cannot be shared with any person (including the patients' family) and institutions without the permission of the patients,
- *We always have respect for the individual differences,
- *The patients always are venerable without looking their individual properties.

*Psychosis *Affective Disorders *Neurotic Disorders *Psychosomatic Disorders *Personality Disorders are diagnosed, treated, and followed by psychiatrists.

*Communication and Conflict Resolution *Perfectionism *Emotional Relationship Models *Problem-Solving Skills *Time Management and Procrastination *Depression Coping Strategies *Self-confidence *Organizing the information (and taking notes) methods *Coping with feelings of rejection and loneliness *Group therapy sessions are followed by psychologists and counsellors.

Psychological Tests: We may apply various psychological tests to give an opportunity to the patients to take sufficient information about the specialist if it is needed.



METU Medical Center.



srmk@metu.edu.tr



srm.metu.edu.tr



(312) 210 49 68
(312) 210 49 69