



ODTÜ PSİKOLOJİ BÖLÜMÜ

Yaz 2009

Faaliyet Bülteni

Kongre



Weisfeld, G., Nowak, N. T., Dillon, L. M., Lucas, T. W., Weisfeld, C. C., Imamoglu, E. O., Butovskaya, M., & Shen, J. (2009). Laughter in marriage in five cultures. International Anthropological Congress of Ales Hrdkicka, Prague, September.

Weisfeld, C. C., Dillon, L. M., Nowak, N. T., Mims, K. R., Weisfeld, G. E., Imamoglu, E. O., Butovskaya, M., & Shen, J. (2009). Sex Differences in Married Couples: Biological and Cultural Influences. International Anthropological Congress of Ales Hrdkicka, Prague, September.

Yalcindag, B. & Imamoglu, E. O. (2009). Courage, related concepts and self-construals. 11th European Psychology Conference, July, Oslo, Norway.

Sümer, N. (2009_July). Data collection: Evidence of European diversity in the PhD qualification. 11th European Congress of Psychology. Invited Symposia. July 7-10. Oslo.

Sümer, N. (2009_July). Psychology student employability: Perspectives from England, Cyprus, Portugal and Turkey. 11th European Congress of Psychology. Invited Symposia. July 7-10. Oslo.

Sümer, N. (2009_July). Predicting Attachment Security in Middle Childhood: The Role Parental Attachment Avoidance. 11th European Congress of Psychology. July 7-10. Oslo.

Göncü, A. (2009). Social Identity Theory: A historical review. Poster presented at the 11th European Congress of Psychology, Oslo, Norway, July 7-10, 2009.

Göncü, A., & Johnson, R. E. (2009). Relationships between paternalistic leadership, vertical collectivism and organizational identification: Comparison of USA and Turkey. Paper presented at the 11th European Congress of Psychology, Oslo, Norway, July 7-10, 2009.

Göncü, A., & Johnson, R. E. (2009). Predictors of interpersonal and informational justice among female supervisors: A relative deprivation perspective. Poster presented at the 11th European Congress of Psychology, Oslo, Norway, July 7-10, 2009.

Göncü, A., & Sumer, N. (2009). Adaptation and validation of the rejection sensitivity questionnaire in Turkey. Poster presented at the 11th European Congress of Psychology, Oslo, Norway, July 7-10, 2009.

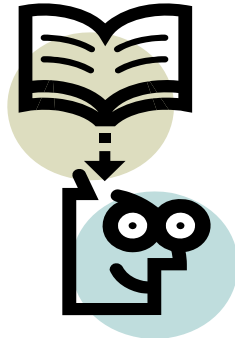
Doğruyol, B., & Sümer, N. (2009_August). Can Regulatory Focuses be Measured via Value Domains? Underlying Assumptions and Cultural Implications. XIVth European Conference on Developmental Psychology. August 18-22, Vilnius

Harma, M., & Sümer, N. (2009_August). Predictive Power of Parenting on Child Adjustment beyond the Effects of Temperament. XIVth European Conference on Developmental Psychology. August 18-22, Vilnius

Öztürk, A., & Sümer, N. (2009_August). Moderating Role of Attachment Security between Temperament and Child Adjustment. XIVth European Conference on Developmental Psychology. August 18-22, Vilnius

Salman, S., & Sümer, N. (2009_August). Parental Availability and Dependency in Predicting Child's Problem Behaviors. XIVth European Conference on Developmental Psychology. August 18-22, Vilnius

Yayınlar



Bozo, Ö., Gündoğdu, E., & Büyükaşık-Çolak, C. (2009). The Moderating Role of Different Sources of Perceived Social Support on the Dispositional Optimism-Posttraumatic Growth Relationship in Postoperative Breast Cancer Patients. *Journal of Health Psychology*, 14(7), 1009-1020.

Bozo, Ö., Tunca, A., & Şimşek, Y. (2009). The Impact of Death Anxiety and Age on Health Promoting Behaviors in a Turkish Sample: A Terror Management Theory Perspective. *Journal of Psychology: Interdisciplinary and Applied*, 143(4), 28-37.

Radyo/TV



Demirtepe, D, & Bozo. Ö. (2009). Bakıcı İyilik Ölçeği'nin Uyarılma, Güvenirlik ve Geçerlik Çalışması. *Psikoloji Yazıları*, 12(23), 28-37.

Prof. Dr. Nebi Sümer yaz suresince Halk TV'de "Dün, Bugün, Yarın" isimli bir program yapmıştır

Doç. Dr. Sibel Kazak Berument 4 Eylül tarihinde Türkiye'nin Sesi Radyosu'nda yayınlanan "çocukluk döneminde dil gelişimi" konulu "pembe mavi" programına konuk olmuştur.

Arş. Gör. Nilüfer Ercan 28 eylül tarihinde Kanal B'de yayınlanan "habercinin saati" programına "toplum ve şiddet" konusunda konuşmacı olarak katılmıştır.

Tamamlanan Tezler

İsim	Alanı	Tez Başlığı
Şeniz Çelimli	Klinik Psikoloji Doktora	A Commparative Study of Family Functioning Processes of Families With an Autistic Child in Turkey and in the United States
Müge Banlı Pala	Klinik Psikoloji Y.L.	Sinemadaki Psikoterapist Temsillerinin Duygusal Zeka bakımından Değerlendirilmesi
Bünyamin Çiçek	Sosyal Psikoloji Y.L.	Pedestrian Safety Around Elementary Schools
Bilge Yalçındağ	Sosyal Psikoloji Y.L.	Relationships between courage, self-construals, and other associated variables